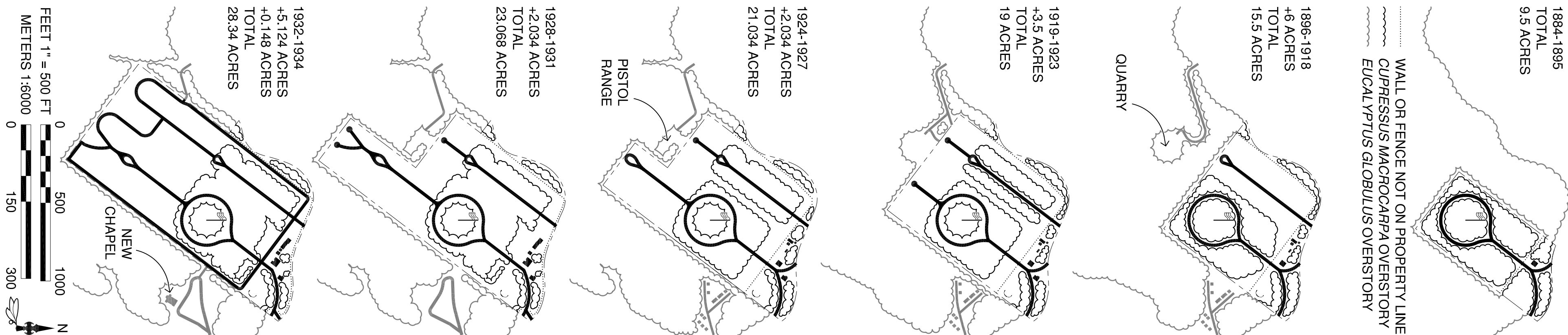
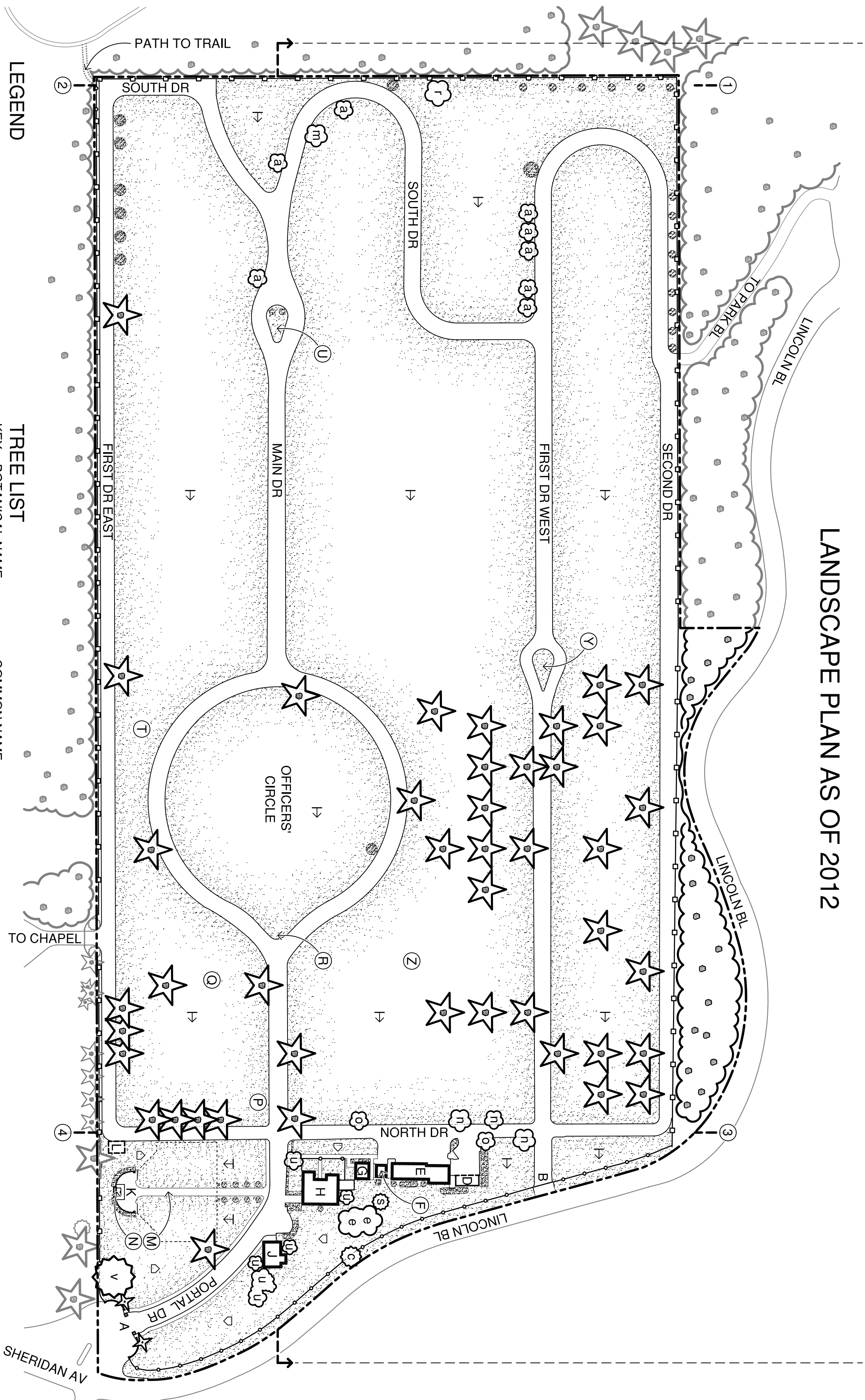
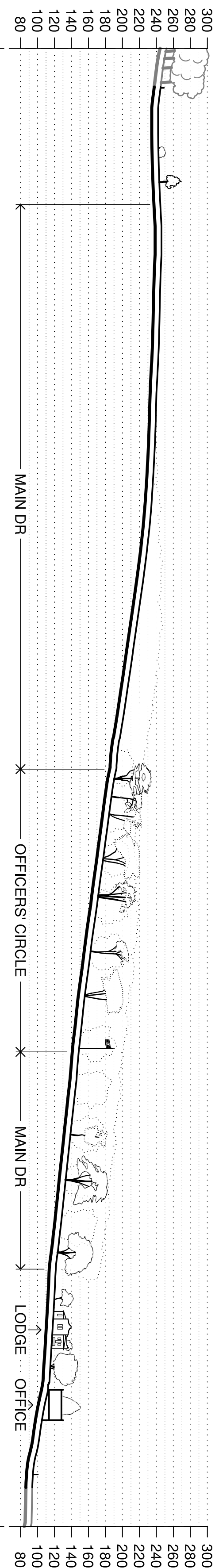


EVOLUTION OF THE CEMETERY LANDSCAPE



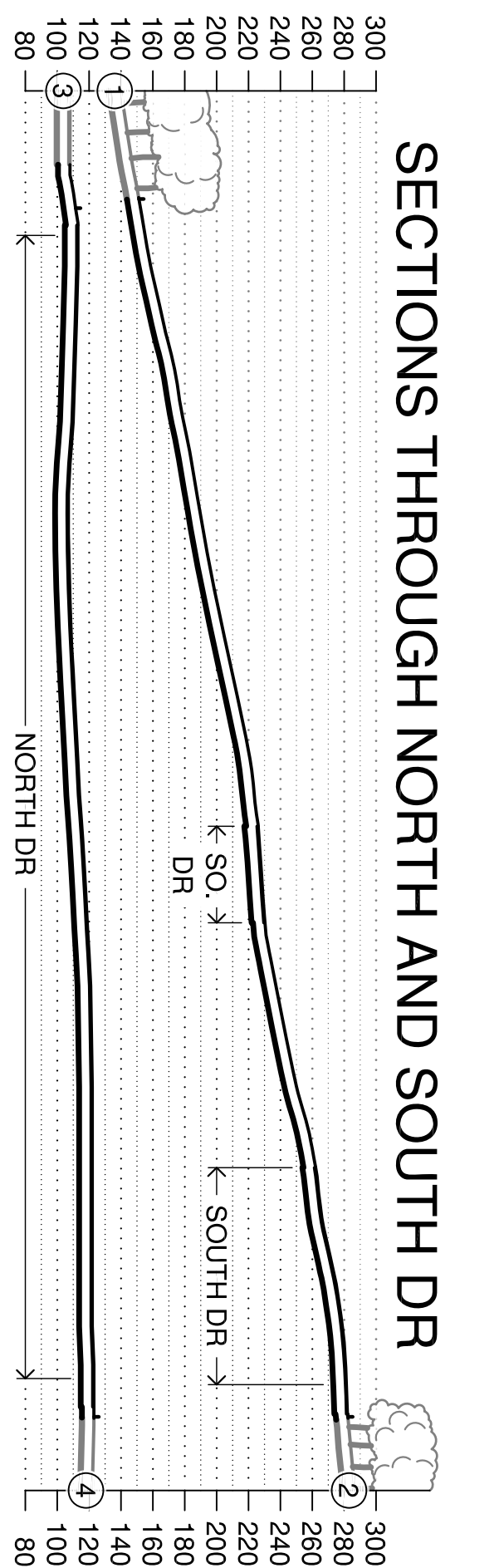
SECTION-ELEVATION THROUGH MAIN DRIVE LOOKING NORTHWEST



- LEGEND**
- PROPERTY LINE
  - SECTION-ELEVATION CUT LINE
  - SECTION CUT LINE
  - IRON FENCE
  - CONCRETE AND STONE WALL
  - SHRUBS AND YOUNG TREES
  - LAWN AND GRAVES\*
  - ASSEMBLY AREA (NO GRAVES)
  - HEADSTONE FACE DIRECTION
  - CREMAINS MARKER DIRECTION

- TREE LIST**
- | KEY | BOTANICAL NAME          | COMMON NAME       |
|-----|-------------------------|-------------------|
| 1   | ACACIA MELANOXYLON      | BLACKWOOD ACACIA  |
| 2   | CALOCEDRUS DECURRENS    | INCENSE CEDAR     |
| 3   | CORYLYNE AUSTRALIS      | DRACAENA PALM     |
| 4   | CUPRESSUS MACROCARPA    | MONTEREY CYPRESS  |
| 5   | CUPRESSUS LUSTANICA     | MEXICAN CYPRESS   |
| 6   | FOREST DOMINATED BY     |                   |
| 7   | EUCALYPTUS GLOBULUS     | RED FLOWERING GUM |
| 8   | EUCALYPTUS FICIFOLIA    | ENGLISH HOLLY     |
| 9   | ILEX AQUICOLUM          | PRIMROSE TREE     |
| 10  | LAGUNARIA PATERSONII    | MYOPORUM          |
| 11  | MYOPORUM LAETUM         | VICTORIAN BOX     |
| 12  | PITTIOSPORUM UNICULATUM | PORTUGAL LAUREL   |
| 13  | PRUNUS LUSTANICA        | COAST REDWOOD     |
| 14  | SECOIA SEMPERVIRENS     |                   |

- RESOURCE LIST**
- | KEY | NAME  |
|-----|---|
| A   | MAIN ENTRANCE (1931)                                      |
| B   | CAST-IRON GATE (CA. 1886, MOVED 1929)                     |
| D   | SHEED (CA. 1989)  |
| E   | SERVICE MAINTENANCE GARAGE (1929)                         |
| F   | GARAGE (1934)   |
| G   | REST ROOM (1929)  |
| H   | LODGE (1884, REMODELED 1929)                              |
| J   | OFFICE (FORMER MORTUARY CHAPEL, 1921, CONVERTED CA. 1948) |
| K   | ROSTRUM (1915)  |
| L   | SHADE STRUCTURE (CA. 1989)                                |
| M   | FLAGPOLE FOR AMERICAN FLAG (CA. 1989)                     |
| N   | LINCOLN TABLET (ON LODGE CA. 1928, MOVED 1934)            |
| P   | U.S. OREGON MONUMENT (CA. 1900)                           |
| Q   | PACIFIC GARRISON MONUMENT (1897)                          |
| R   | FLAGPOLE FOR POW/MIA FLAG (CA. 2007)                      |
| T   | GRAND ARMY OF THE REPUBLIC MEMORIAL MONUMENT (1893)       |
| U   | AMERICAN WAR MOTHERS MONUMENT (1934)                      |
| Y   | UNKNOWN SOLDIERS MONUMENT (1934)                          |
| Z   | SACRAMENTO CITIZENS MONUMENT (CA. 1894)                   |

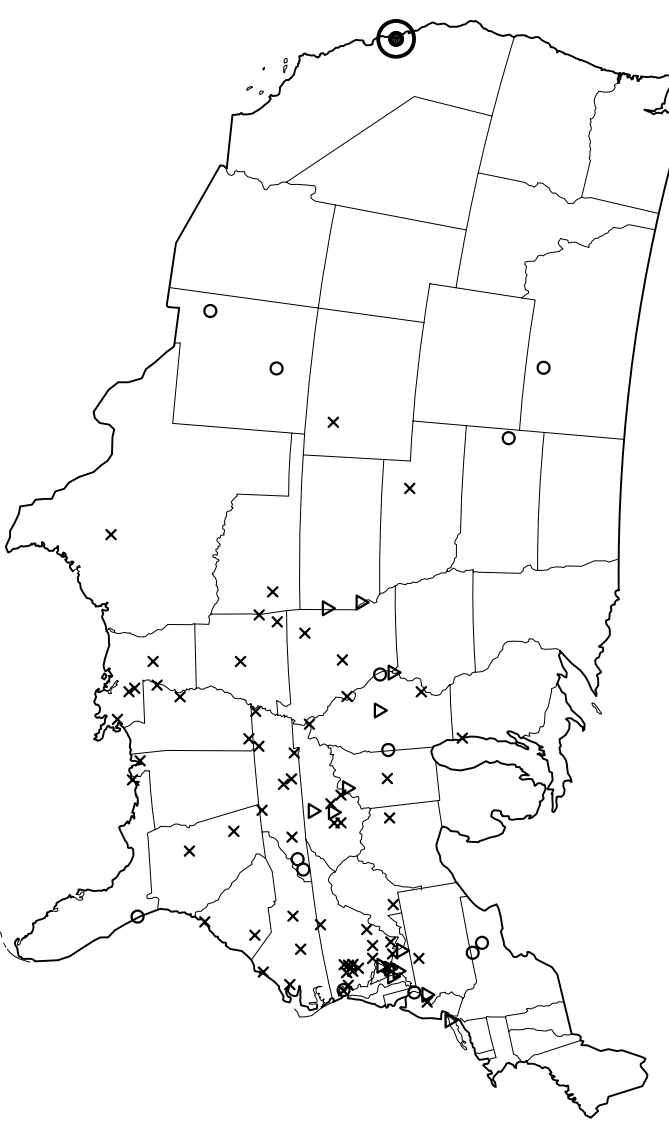


NATIONAL CEMETERY  
AT THE PRESIDIO OF  
SAN FRANCISCO, CALIF.

WHEN THE SAN FRANCISCO NATIONAL CEMETERY WAS ESTABLISHED IN 1884, IT WAS THE FIRST NATIONAL CEMETERY ON THE PACIFIC COAST, AND IT REMAINED THE ONLY NATIONAL CEMETERY ON THAT COAST FOR FORTY YEARS. SINCE AT LEAST 1866, THE CEMETERY SITE SERVED AS THE POST CEMETERY FOR THE PRESIDIO OF SAN FRANCISCO. A STRATEGIC MILITARY POST ESTABLISHED BY SPAIN IN 1776, THE NATIONAL CEMETERY IS LOCATED ADJACENT TO, AND HAS THE SAME ORIENTATION AS, THE HISTORIC MAIN POST, AND IT FRONTS LINCOLN BOULEVARD, ONE OF THE MAIN HISTORIC ROADS THROUGH THE PRESIDIO. THE NATIONAL CEMETERY NEARLY TRIPLED IN SIZE DURING ITS FIRST FIFTY YEARS. THE LANDSCAPE HAS CHANGED LITTLE SINCE 1934, EXCEPT FOR THE LOSS OF TREE CANOPY, AND IS A MAJOR DESIGNED LANDSCAPE COMPONENT WITHIN THE LARGER PRESIDIO LANDSCAPE. THE NORTHEAST HALF OF THE NATIONAL CEMETERY IS OF PREDICTED ARCHEOLOGICAL INTEREST FOR THE PERIOD 1866-1899.

LARGE-FORMAT PHOTOGRAPHY WAS PRODUCED BY CLAYTON B. FRASER IN 2005. THE NORTH ARROW WAS SKETCHED FROM PHOTOGRAPHS BY FRASER OF THE CAST-IRON GATE (HALS NO. CA-1-1) AND THE UNKNOWN SOLDIERS MONUMENT (HALS NO. CA-1-31). LANDSCAPE DRAWINGS WERE PREPARED BY CATE BAINTON FROM HISTORIC MAPS, HISTORIC AERIAL PHOTOGRAPHS, AND FIELD OBSERVATIONS DURING MAY 2012. THE CORRESPONDING HALS REPORT WAS WRITTEN BY CATE BAINTON.

NATIONAL CEMETERIES  
THE FIRST SIXTY YEARS  
YEAR ESTABLISHED AS A NATIONAL CEMETERY  
1882 \* 1883-1872  
SAN FRANCISCO NATIONAL CEMETERY  
1873-1922



PRESIDIO  
OF SAN FRANCISCO  
SAN FRANCISCO NATIONAL CEMETERY  
WGS84 DD: 37.799991 LAT., -122.46371 LONG.

